



## 92 & 92S SERIES

### QPL: MS21422



### MIL-PRF-15305

### ELECTRICAL SPECIFICATIONS

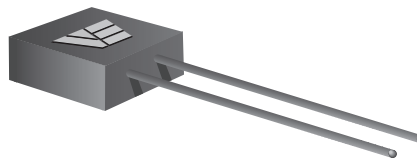
- **Operating Temperature:** -55°C to +125°C
- **Storage Temperature:** -60°C to +130°C
- **Temperature Rise @ 90°C:** < 35°C
- **Inductance at rated DC:** < 30%
- **Dielectric Withstanding Voltage:** 700 V<sub>RMS</sub>
- **Inductance Tolerances:** 0.10 to 0.82 uH, ± 10%; 1.0 to 10 uH, ± 5%; (closer tolerances on request)
- **Inductance TC:** +20 ppm/°C nominal; +50 ppm/°C Max
- **Frequency Range:** 1 to 50 MHz
- **Maximum Dissipation:** 200 mW
- **Terminal Pull:** 5 pounds
- **Overload Current:** 1.4 times the rated current
- **Different electrical values available upon request**

### FEATURES

- **Low External Magnetic Field** of toroid permits tighter packaging of units that with other inductive devices
- **Leads:** Tin-lead coated copper wire
- Designed to meet **MIL-PRF-15305**, Grade 1, Class B
- **Moisture, Shock and Immersion Resistant**
- **Altitude Rating:** 70,000 ft
- Order to Mil-spec part number or VE part number
- Compliant to **MIL-STD-981**, Family 13

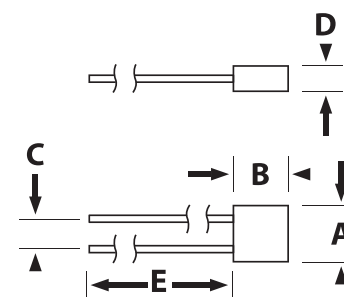
Inductance Range (uH)	DCR max (Ohms)	Current Rating (mA)
0.1 to 10	0.04 to 2.6	280 to 2200

### 92 SERIES

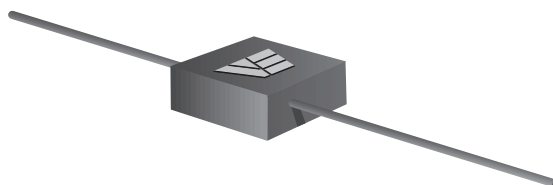


#### DIMENSIONAL DATA - INCHES

A	0.200 ± 0.010
B	0.200 +.030/- .00
C	0.100 ± 0.010
D	0.100 ± 0.010
E	1.0 MIN.

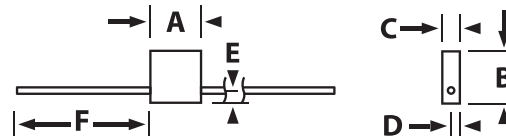


### 92S SERIES

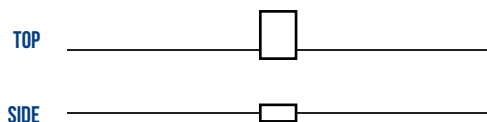
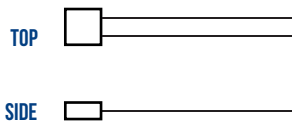


#### DIMENSIONAL DATA - INCHES

A	0.200 ± 0.010
B	0.260 MAX.
C	0.100 ± 0.010
D	0.050 ± 0.010
E	0.050 ± 0.015
F	1.0 MIN.



#### ACTUAL SIZE



## 92 & 92S SERIES





DATA TABLE

VE P/N	MS21422 Dash Number	Side-Lead Part Number	Inductance Nom (uH)	Q Min	Test Freq (MHz)	SRF Min (MHz)	DCR Max (Ohms)	DC Current Max (mA)
9201	-01	9201S	0.10	55	25	450	0.04	2200
9202	-02	9202S	0.12	60	25	400	0.05	2000
9203	-03	9203S	0.15	60	25	350	0.06	1800
9204	-04	9204S	0.18	60	25	320	0.07	1600
9205	-05	9205S	0.22	65	25	300	0.08	1500
9206	-06	9206S	0.27	65	25	280	0.10	1400
9207	-07	9207S	0.33	65	25	260	0.11	1300
9208	-08	9208S	0.39	65	25	240	0.14	1200
9209	-09	9209S	0.47	65	25	220	0.17	1100
9210	-10	9210S	0.56	70	25	200	0.22	1000
9211	-11	9211S	0.68	70	25	180	0.27	900
9212	-12	9212S	0.82	70	25	160	0.30	800
9213	-13	9213S	1.0	70	25	150	0.35	750
9214	-14	9214S	1.2	60	7.9	130	0.40	700
9215	-15	9215S	1.5	60	7.9	120	0.50	630
9216	-16	9216S	1.8	60	7.9	110	0.70	530
9217	-17	9217S	2.2	60	7.9	100	0.90	470
9218	-18	9218S	2.7	60	7.9	90	1.1	420
9219	-19	9219S	3.3	60	7.9	70	1.3	390
9220	-20	9220S	3.9	60	7.9	60	1.5	360
9221	-21	9221S	4.7	60	7.9	50	1.8	330
9222	-22	9222S	5.6	60	7.9	45	2.0	310
9223	-23	9223S	6.8	60	7.9	40	2.2	300
9224	-24	9224S	8.2	60	7.9	37	2.4	290
9225	-25	9225S	10	60	7.9	35	2.6	280

Inductance measured at 10 kHz, 0.1 V<sub>RMS</sub>

CUSTOM DESIGNS & MODIFICATIONS:

Other electrical configurations and performance characteristics are available in various sizes and package types

92 & 92S SERIES

