



## 93 & 93S SERIES

### QPL: MS21424



### MIL-PRF-15305

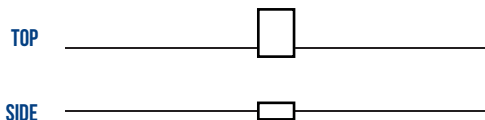
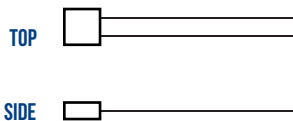
### ELECTRICAL SPECIFICATIONS

- **Operating Temperature:** -55°C to +125°C
- **Storage Temperature:** -60°C to +130°C
- **Temperature Rise @ 90°C:** < 35°C
- **Inductance at rated DC:** < 30%
- **Dielectric Withstanding Voltage:** 700 V<sub>RMS</sub>
- **Inductance Tolerances:** ± 5%
- **Inductance TC:** ≤ 270 uH +25 ppm/°C Max; 330 thru 1000 uH +125 ppm/°C Max
- **Frequency Range:** 50 KHz to 50 MHz
- **Maximum Dissipation:** 333 mW
- **Terminal Pull:** 5 pounds
- **Overload Current:** 1.4 times the rated current
- **Different electrical values available upon request**

### FEATURES

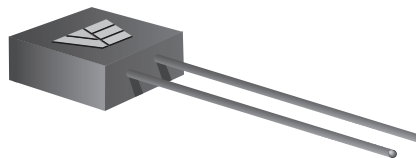
- **Low External Magnetic Field** of toroid permits tighter packaging of units that with other inductive devices
- **Leads:** Tin-lead coated copper wire
- Designed to meet **MIL-PRF-15305**, Grade 1, Class B
- **Moisture, Shock and Immersion Resistant**
- **Altitude Rating:** 70,000 ft
- Order to Mil-spec part number or VE part number
- Compliant to **MIL-STD-981**, Family 13

ACTUAL SIZE



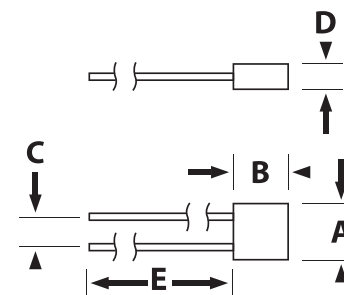
Inductance Range (uH)	DCR max (Ohms)	Current Rating (mA)
10 to 1000	1.1 to 27	100 to 550

### 93 SERIES

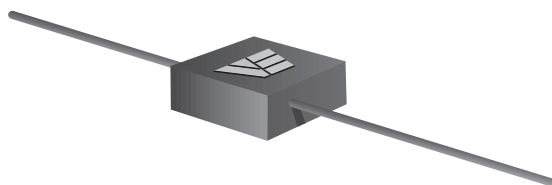


#### DIMENSIONAL DATA - INCHES

A	0.270 ± 0.010
B	0.270 +.030/-0.00
C	0.200 ± 0.010
D	0.150 ± 0.010
E	1.0 +.125/-0.000

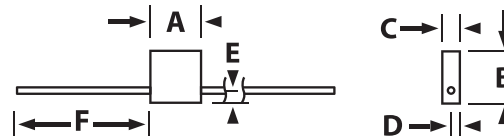


### 93S SERIES



#### DIMENSIONAL DATA - INCHES

A	0.270 ± 0.010
B	0.330 MAX.
C	0.150 ± 0.010
D	0.075 ± 0.010
E	0.050 ± 0.015
F	1.0 +.125/-0.000



## 93 & 93S SERIES





### DATA TABLE

VE P/N	MS21424 Dash Number	Side-Lead Part Number	Inductance Nom (uH)	Q Min	Test Freq (MHz)	SRF Min (MHz)	DCR Max (Ohms)	DC Current Max (mA)
93210	-01	93210S	10	75	2.5	35	1.1	550
93212	-02	93212S	12	75	2.5	31	1.3	500
93215	-03	93215S	15	75	2.5	27	1.5	450
93218	-04	93218S	18	80	2.5	24	1.9	410
93222	-05	93222S	22	80	2.5	22	2.3	380
93227	-06	93227S	27	80	2.5	20	2.7	350
93233	-07	93233S	33	80	2.5	18	3.3	320
93239	-08	93239S	39	80	2.5	16	3.9	290
93247	-09	93247S	47	80	2.5	14	4.7	260
93256	-10	93256S	56	80	2.5	12	5.6	240
93268	-11	93268S	68	80	2.5	11	6.8	220
93282	-12	93282S	82	80	2.5	10	8.1	200
93310	-13	93310S	100	80	2.5	9.1	9.7	180
93312	-14	93312S	120	45	.79	8.2	12	160
93315	-15	93315S	150	45	.79	7.3	14	150
93318	-16	93318S	180	45	.79	6.4	17	140
93322	-17	93322S	220	55	.79	5.6	20	130
93327	-18	93327S	270	55	.79	5.0	24	120
93333	-19	93333S	330	55	.79	4.4	19	130
93339	-20	93339S	390	55	.79	3.9	22	120
93347	-21	93347S	470	55	.79	3.5	27	110
93356	-22	93356S	560	55	.79	3.1	32	100
93368	-23	93368S	680	55	.79	2.8	19	130
93382	-24	93382S	820	50	.79	2.5	23	120
93410	-25	93410S	1000	50	.79	2.2	27	110

Inductance measured at 10 kHz, 0.1 V<sub>RMS</sub>

#### CUSTOM DESIGNS & MODIFICATIONS:

Other electrical configurations and performance characteristics are available in various sizes and package types

## 93 & 93S SERIES

