



SCSN 100 SERIES

NANOCRYSTALLINE COMMON MODE CHOKE



ELECTRICAL SPECIFICATIONS

- **Operating Temperature:** -55°C to +125°C
- **Storage Temperature:** -60°C to +130°C
- **Temperature Rise @ 90°C:** < 40°C
- **Dielectric Withstanding Voltage:** 500 Vac
- **Insulation Resistance:** 10K mOhms minimum
- **Frequency of Operation:** Up to 10 MHz
- **Different electrical values available upon request**
- **Outgassing compliant per ASTM E595**
(TML <1%, CVCM <0.1%)

FEATURES

- **Compact**, low profile, ideal for automatic placement
- Built to meet **MIL-STD-981** specifications
- **Low Thermal Expansion, Transfer Molded Package**
- **Terminations:** Tin-lead
- Other termination finishes available upon request
- Welded Internal Connections
- **Moisture, Shock and Immersion Resistant**
- **Resistance to Soldering Heat:** 265°C for 10 secs
- **Nanocrystalline Core Offers High Current Accuracy**
- **MIL-STD-981 Testing:**
Add “-S” suffix for Class S Testing
Add “-B” suffix for Class B Testing

Package	A max	B max	C max	D	E	F	G	H
SCSN100	.260	.260	.200	.085	.085	.290	.185	.105
SCSN101	.260	.260	.230	.085	.085	.290	.185	.105
SCSN102	.410	.410	.230	.135	.135	.440	.285	.155
SCSN103	.410	.410	.310	.135	.135	.440	.300	.140
SCSN104	.535	.535	.310	.200	.200	.565	.345	.220
SCSN105	.700	.700	.400	.250	.250	.740	.460	.280

CUSTOM DESIGNS & MODIFICATIONS:

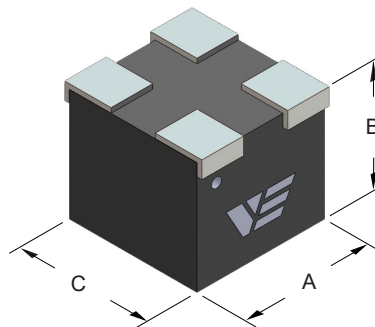
Other electrical configurations and performance characteristics are available in various sizes and package types

ALL PARTS AVAILABLE AS CLASS S OR CLASS B

MIL-STD-981

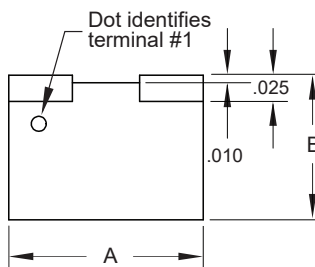
Current Rating (A)	DCR (mOhms)	Inductance Range (mH)
5.6 to 19.6	0.36 to 5.00	6.67 to 2040

ALL DIMENSIONS: INCHES

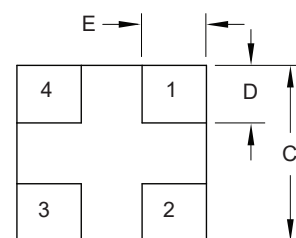


THRU-HOLE &
GULL-WING PACKAGES ALSO
AVAILABLE

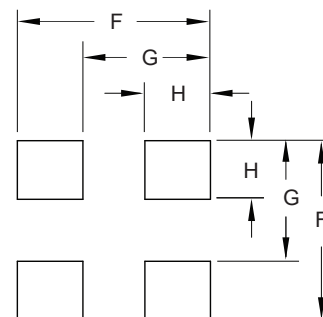
MARKINGS: LASER ETCH OR INK



SIDE VIEW



BOTTOM VIEW



RECOMMENDED MOUNTING PAD CIRCUIT SIDE





DATA TABLE

Vanguard P/N	Inductance ref. (mH)	DCR Secondary max. (Ohms)	I _{pk} max. (A)	ET ref. (V-us)	Turns Ratio
SCSN100-20	6.7	0.36	5.6	40	1:20
SCSN100-50	42	0.90	8.0	100	1:50
SCSN100-100	167	1.80	10.0	200	1:100
SCSN101-50	40	1.00	9.1	93.75	1:50
SCSN101-100	160	1.90	10.2	187.5	1:100
SCSN101-200	640	3.90	11.4	375	1:200
SCSN102-50	35	1.10	10.1	125	1:50
SCSN102-100	141	2.20	11.4	250	1:100
SCSN102-200	563	4.40	12.0	500	1:200
SCSN103-50	46	1.20	11.8	150	1:50
SCSN103-100	185	2.50	13.2	300	1:100
SCSN103-200	740	5.00	13.8	600	1:200
SCSN104-50	55	0.60	13.1	135	1:50
SCSN104-100	218	1.10	14.7	270	1:100
SCSN104-200	872	2.20	15.8	540	1:200
SCSN105-50	128	0.60	17.2	250	1:50
SCSN105-100	510	1.10	18.7	500	1:100
SCSN105-200	2040	2.30	19.6	1000	1:200

Inductance measured at 10 kHz, 0.1 V_{RMS}
 Temperature rise < 40°C at Rating Current

CUSTOM DESIGNS & MODIFICATIONS:

Other electrical configurations and performance characteristics are available in various sizes and package types

SCSN 100 SERIES

